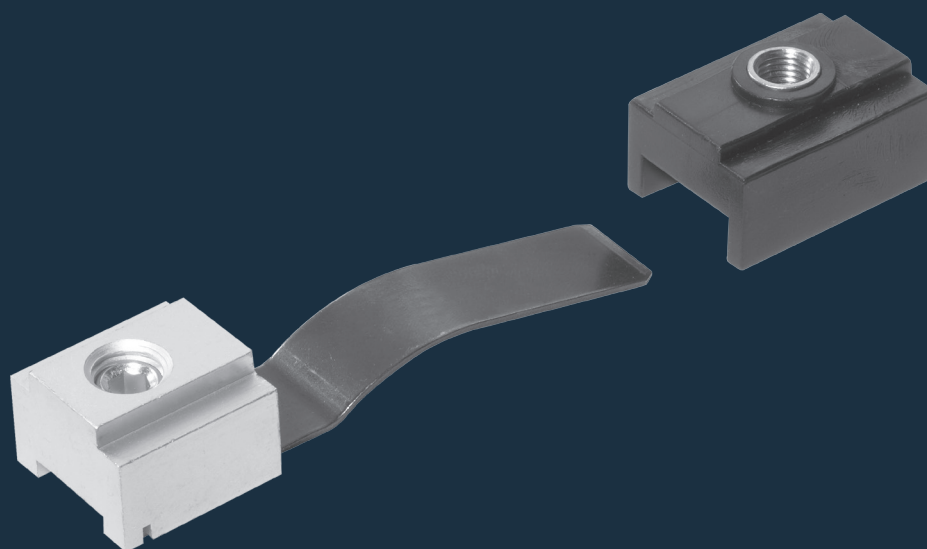




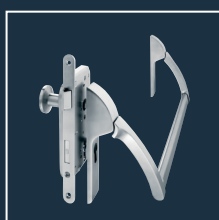
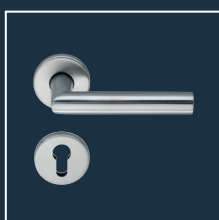
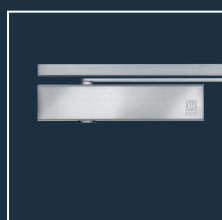
# ECO Accessories

## Mechanical hold open

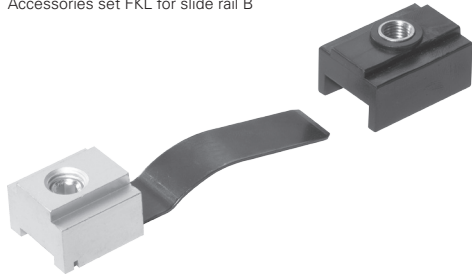
Product information



### ■ SYSTEM TECHNOLOGY FOR THE DOOR



Accessories set FKL for slide rail B



**Accessories set FKL**

Mechanical hold open for belated assembly in slide rail B. Not permitted for use in fire protection. 30 x 21 mm.

- Suitable for slide rail B.

Mechanical hold open FKL	Article number
FKL-GS-B	350100000056200

**Accessories set SR-FKL**

Mechanical hold open for belated assembly in slide rail SR. Not permitted for use in fire protection. 30 x 21 mm. Hold open angle from 80 - 130° adjustable.

- Suitable for slide rail SR

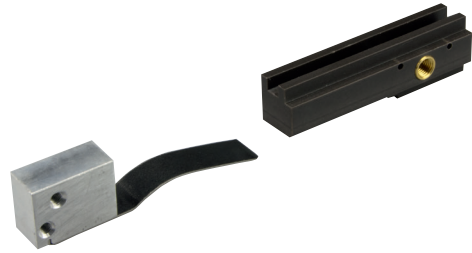
Mechanical hold open SR-FKL	Article number
FKL-GS-SR active leaf DIN left	350100000058200
FKL-GS-SR active leaf DIN right	350100000058100
FKL-GS-SR passive leaf DIN left	350100000057200
FKL-GS-SR passive leaf DIN right	350100000057100

**Accessories set SR-FKL BG**

Mechanical hold open for belated assembly in slide rail SR BG. Not permitted for use in fire protection. 30 x 21 mm. Hold open angle from max. 110° adjustable. For exterior doors under wind load and heavy doors, the holding power is reduced accordingly.

- Suitable for slide rail SR BG

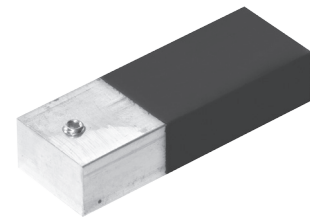
Mechanical hold open SR-FKL BG	Article number
FKL-GS-SR BG active leaf DIN left	350100000058200
FKL-GS-SR BG active leaf DIN right	350100000058100
FKL-GS-SR BG passive leaf DIN left	350100000062200
FKL-GS-SR BG passive leaf DIN right	350100000062100



## Accessories - Hold open

### Accessories set MOL I slide rail Basis \*

Mechanically adjustable opening limit for the slide rail B (Basis) The opening angle can be locked by moving the MOL in the slide rail. 30 x 20 mm.



Mechanically adjustable opening limit	Article number
ÖB-GS-B	350100000054000

### ECO pivot hinge 31

Pivot hinge with stainless steel cover (TS-31 body empty, without spring and oil), mounting plate, arm (long) with four edges. Pivot hinge for combination with closing sequence FDC-B



Mechanically adjustable opening limit	Article number
Pivot hinge 31	353111000A00000

### ECO pivot hinge MOL 31 with door stopper function\*

Free-running pivot hinge with adjustable opening limit. Opening angle can be adjusted between 80 - 130° by moving the MOL in the slide rail. The door shock is absorbed by the rubber part and thus takes over the door stopper function if no floor stopper can be installed.



Consists:

- Pivot hinge with stainless steel cover (TS-31 body empty, without spring and oil)
- Mounting plate
- Slide rail B with mechanically adjustable opening limiter (MOL)
- Arm for slide rail B with four edges

Mechanically adjustable opening limit	Article number
Pivot hinge MOL 31 with mechanically adjustable opening limit	303111000A01010

#### \* NOTE!

To be used on light interior doors only. Normal use of door is recommended. Incorrect use or heavy doors increases the load on the hinges! Standard mounting pull side or push side (using an under-lintel angle). Installation according to DIN holes acc. to EN.



ECO Schulte GmbH & Co. KG  
Iserlohner Landstraße 89  
D - 58706 Menden

Telefon: +49 2373/9276-0  
Fax: +49 2373/9276-40

[info@eco-schulte.de](mailto:info@eco-schulte.de)  
[www.eco-schulte.de](http://www.eco-schulte.de)

© ECO Schulte GmbH & Co. KG - Änderungen vorbehalten  
© ECO Schulte GmbH & Co. KG - Subject to change